

Member IMC Group
Ingersoll
Cutting Tools

MARCH/APRIL 2023

BLITZ

PROMO



GOLD FLEX™ 20



Grooving family expands with **NEW** 20mm insert and holders for Swiss Machines

- 4-edge miniature insert for grooving, parting, turning, profiling and threading on Swiss-type lathes

PC
290A

PURCHASE 10 inserts
& **RECEIVE**

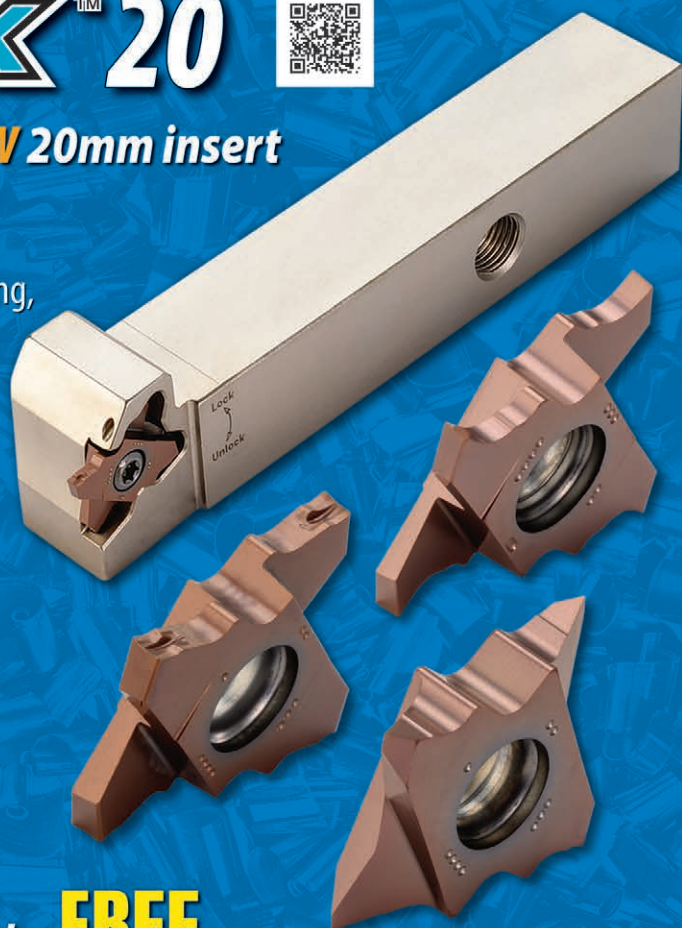
one corresponding holder **FREE**

OR

PC
290B

PURCHASE 20 inserts
& **RECEIVE**

one corresponding CoolBurst holder **FREE**



FLEXTURN™



Qwik change modular head & holder system for Swiss Machines

- Head options include ISO turning, back turning, grooving, threading and y-axis

PC
291A

PURCHASE a shank & 10 inserts
& **RECEIVE**

one corresponding head **FREE**

OR

PC
291B

PURCHASE a shank & 20 inserts
& **RECEIVE**

one corresponding CoolBurst head **FREE**



SPEED UP
HIGH SPEED & FEED

HIPOSSFEED[®]V™



Economical & flexible alternative to solid carbide

- .250"-.500" diameter range, up to 4-effective teeth!
- 90° and hi-feed inserts fit the same v-bottom pocket

PC
292

PURCHASE

10 inserts / per pocket

& RECEIVE

one corresponding tool body

FREE



NUMAX[®]HF™



Hi-feed face mill with steep ramp angles & dovetail seating

- Unique diamond shaped tangential inserts provide hi-feed ramping capability

PC
293

PURCHASE

10 inserts / per pocket

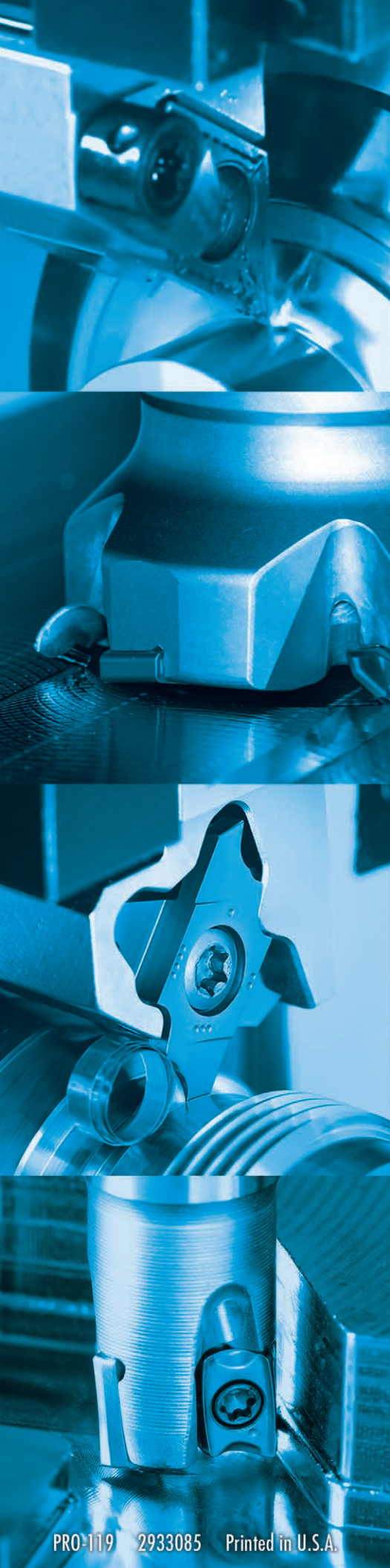
& RECEIVE

one corresponding face mill body

FREE



SPEED UP
HIGH SPEED & FEED



Ingersoll Cutting Tools reserves the right to limit quantities, to change the terms of the promotion without notice, and to refuse an order that does not conform with the terms and conditions contained or implied herein. Offer good March 1st through April 30th, unless otherwise noted, or while supplies last. Prices exclude applicable taxes. All promotions based on the price list in effect at the time the order is placed. Distributor orders must be drop shipped to the end user. Limit of 5 of the same product to the same end user.

Member IMC Group
Ingersoll
Cutting Tools

Marketing & Technology Center

845 S. Lyford Road • Rockford, IL 61108-2749 U.S.A. • Tel: 815.387.6600

Fax: 815.387.6968 • Email: info@ingersoll-imc.com • Internet: www.ingersoll-imc.com